

## Spherical revolving handle

“Soft-touch” technopolymer

### MATERIAL

High-resilience polypropylene based (PP) technopolymer, coated with “soft-touch” thermoplastic elastomer (TPE) chemically bonded, hardness 70 Shore A, black colour, matte finish.

Raw material coating suitable for contact with food (FDA CFR.21 and EU 10/2011).

### STANDARD EXECUTION

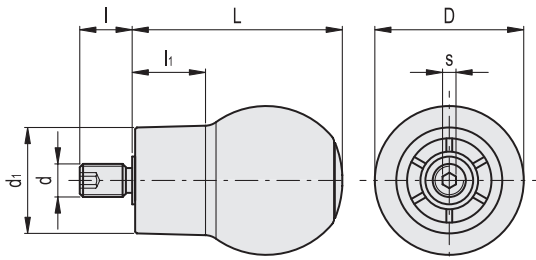
Zinc-plated steel shank, hexagon socket at threaded end.

### FEATURES AND APPLICATIONS

The coating, with “Soft-touch” elastomer, improves the grip even in the presence of oils, greases and sweat from the hand. For this reason it is suitable for fitness machines, tools and machines for gardening and goods transport, high-precision instruments and disability aids.



 ERGOSTYLE®



Code	Description	D	L	d6g	d1	I	l1	s	$\Delta$
247051	EBS.48 SOFT+x-M10	48	66	M10	35	17	23	5	100

## Spherical revolving handles

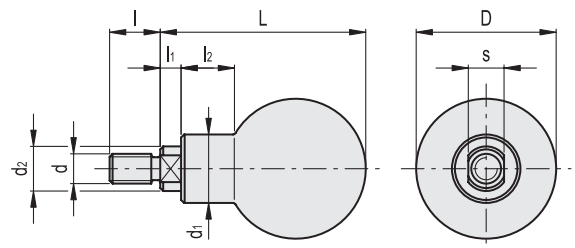
Duroplast

### MATERIAL

Phenolic based (PF) Duroplast, black colour, glossy finish.

### STANDARD EXECUTION

Zinc-plated steel threaded shank, two flat faces for fitting with 12 mm spanner.



Code	Description	D	L	d6g	d1	d2	I	l1	l2	s	$\Delta$
45981	P.111/37+x-M8	37	54	M8	18	15	15	7	13	12	55
46011	P.111/47+x-M10	47	69	M10	23	15	17	7	17	12	130



5

Fixed and Revolving Handles